

POWDER COATED STAMPED SERIES - SHAPES

Shown: PC45/1



Art. PC44/1
Mtl 9/16" dia.
H 44 3/32"
Wt. 4.3 lbs.



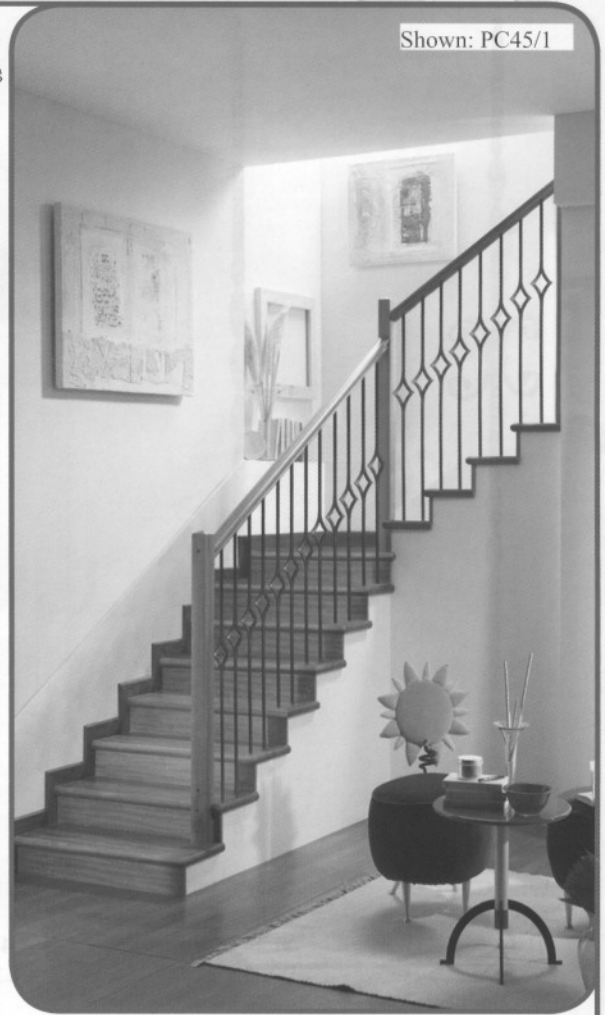
Art. PC44/2
Mtl 9/16" dia.
H 44 3/32"
Wt. 3.45 lbs.



Art. PC45/1
Mtl 9/16" sq.
W 4 3/4"
H 44 3/32"
Wt. 2.75 lbs.



Art. PC45/2
Mtl 9/16" sq.
W 4 3/4"
H 44 3/32"
Wt. 3.3 lbs.



Art. PC46/1
Mtl 9/16" sq.
H 44 3/32"
Wt. 3.7 lbs.



Art. PC47/1
Mtl 1/2" sq.
W 4"
H 44 3/32"
Wt. 5.6 lbs.



Art. PC48/1
Mtl 1/2" sq.
W 2 3/4"
H 44 3/32"
Wt. 5 lbs.



Art. PC49/1
Mtl 1/2" sq.
H 44 3/32"
Wt. 2.3 lbs.



Art. PC49/2
Mtl 1/2" sq.
H 44 3/32"
Wt. 3.7 lbs.



Art. PC50/1
Mtl 1/2" sq.
H 44 3/32"
W 4 3/4"
Wt. 3.5 lbs.